

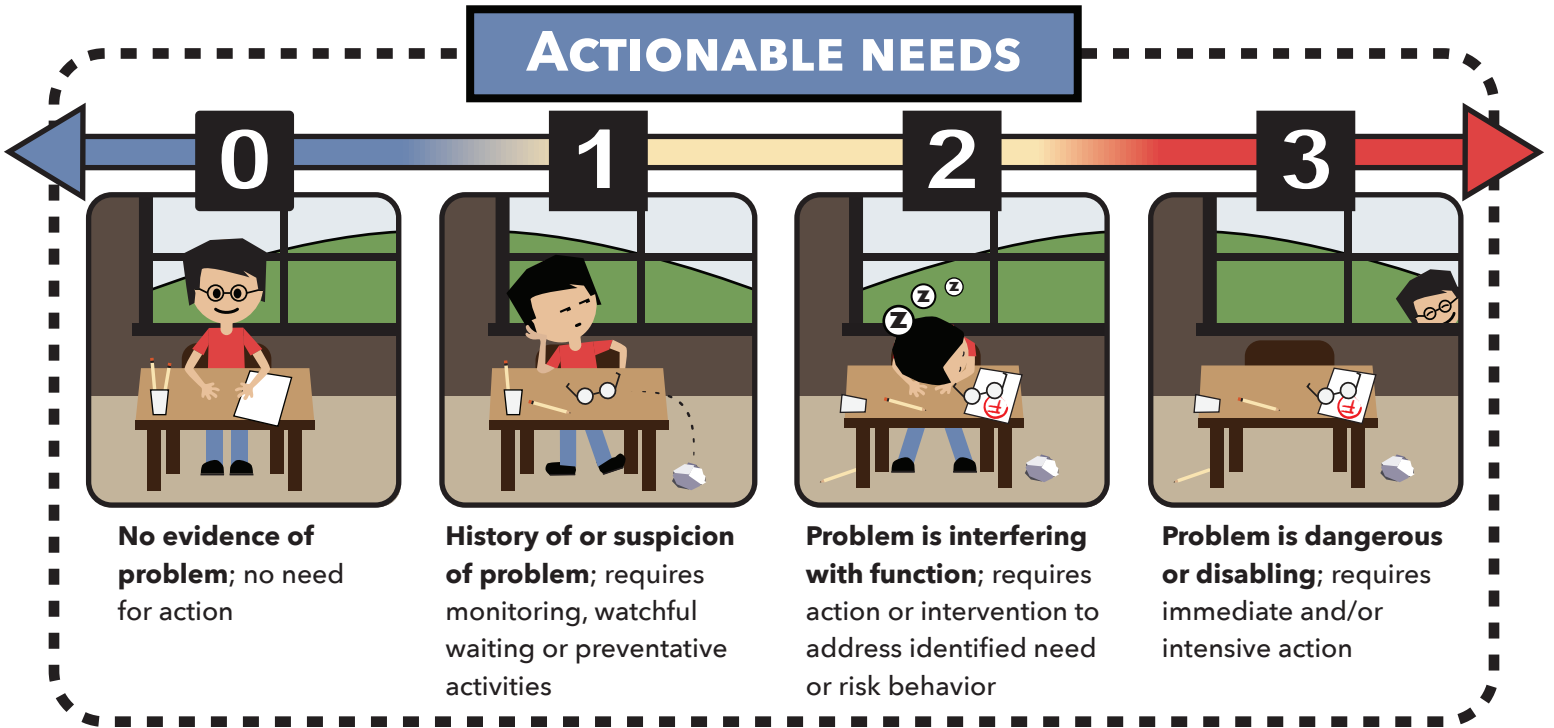


CANS

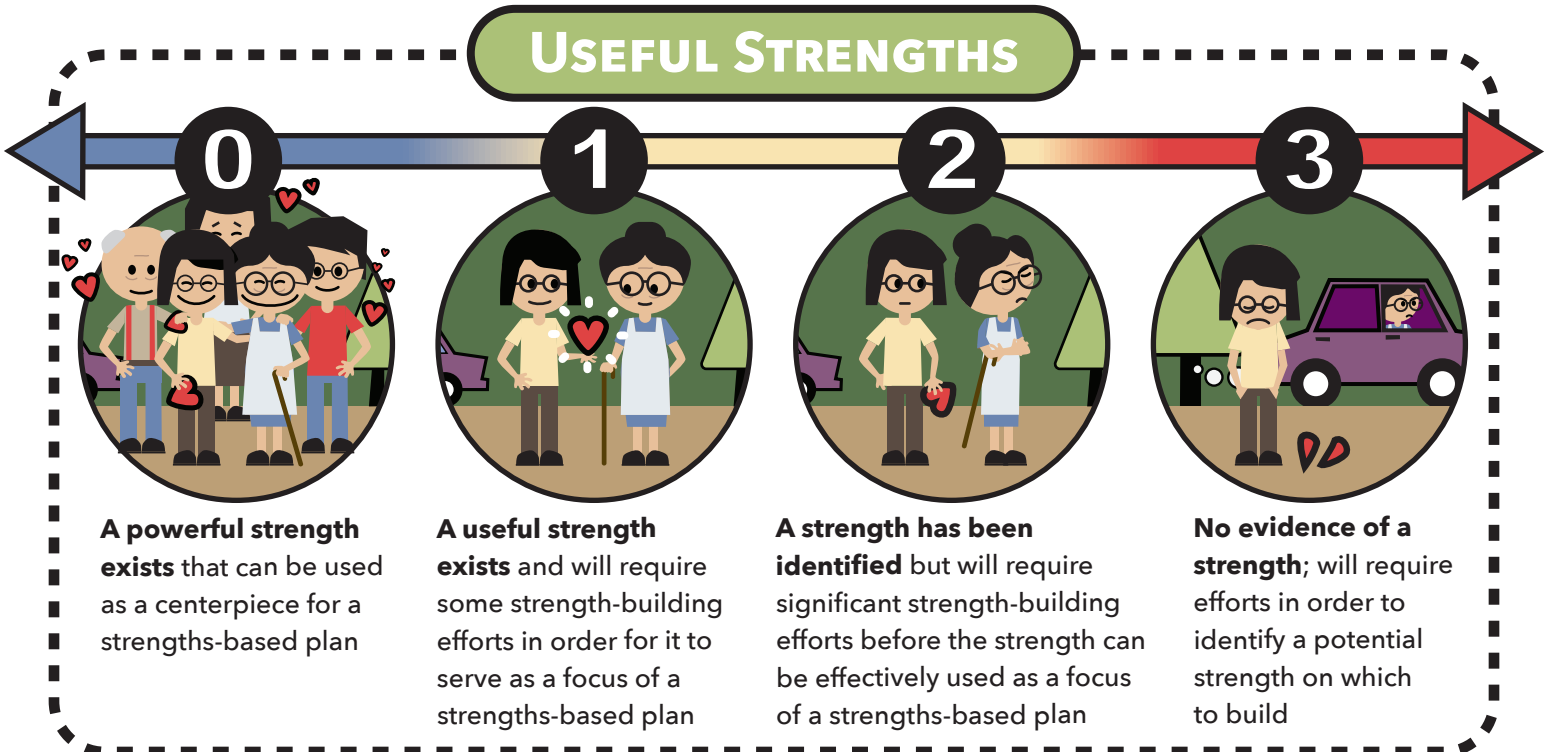
The Child and Adolescent Needs and Strengths Tool

0-3 RATING SYSTEM

ACTIONABLE NEEDS



USEFUL STRENGTHS



1

All CANS items—such as functioning, risk factors, emotional and behavioral needs—are relevant for planning and decision-making.



2

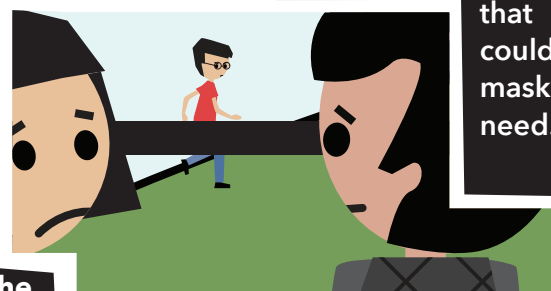
The focus is on the youth's needs, not interventions or services that could mask a need.



The CANS is a comprehensive tool.



The CANS is STRENGTHS-BASED, focused on meeting the youth's and family's needs using the identified strengths.



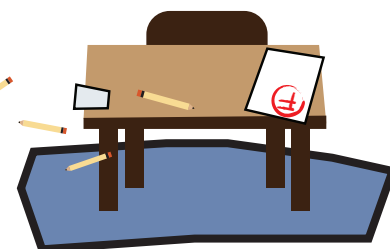
The CANS keeps the conversation FAMILY-DRIVEN and YOUTH-GUIDED by being purposefully direct, transparent and clear. It has simple ratings so that all people in the family's life can review and use the measure as a way to communicate about how the process is working.



3

CANS is about the What, not the Why.

Rather than trying to explain the underlying causes of a need, the CANS provides information to help the Wraparound team make decisions about what to focus on, where to start, or how to prioritize needs.



4

The CANS ratings translate into action levels.



It is OUTCOME-BASED, measuring a youth's and family's progress toward completing outcomes and meeting prioritized needs over time.



5

Based on action levels, specific 30-day rating windows can be over-ridden.



The CANS is COLLABORATIVE and allows professionals to enter all of the information they

have in one place, in order to be shared between team members quickly and easily.

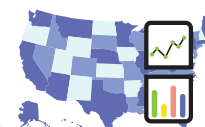


6

The CANS considers an individual's culture and developmental stage before establishing action levels.



The CANS provides a means for aggregation and analysis at program, region, and state levels. Using outcomes to drive system change allows for Systems of Care to be FAMILY-DRIVEN and YOUTH-GUIDED.



Suggested citation: Systems of Care Institute (2022). Tool Time: CANS. The Child and Adolescent Needs and Strengths Tool. Portland, OR: Portland State University, Center for Improvement of Child and Family Services.