

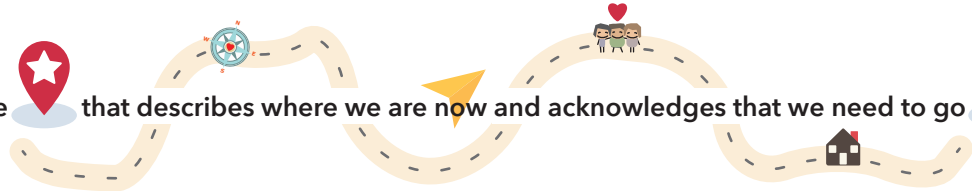
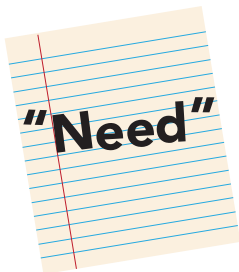




GUIDELINES FOR WRITING NEED AND OUTCOME STATEMENTS

A need is a starting place  that describes where we are now and acknowledges that we need to go  somewhere. 

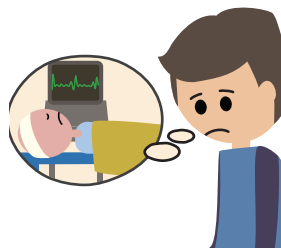
NEED STATEMENTS



Includes the word "need"



Is connected to a Wraparound life domain



Is it the heart or core of a basic human need?



Is not an action, except for legal mandates

~~"Needs to feel"~~
~~"Needs to be"~~

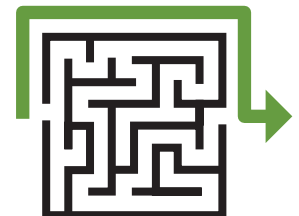
"Needs to feel" or "needs to be" are not allowed



Includes only one person, except for needs in the Wraparound Family and Relationships life domain



Is not a service or a strategy



Keep it simple!

FILL IN THE BLANKS TO ARRIVE AT THE TRUE NEED STATEMENT

What is it that you hope to get out of [INSERT SERVICE OR STRATEGY] ...

How will [INSERT SERVICE OR STRATEGY] help you...

What type of concerns do you want [INSERT SERVICE OR STRATEGY] to address...

What does the youth/family need help with that [INSERT SERVICE OR STRATEGY] will address...

OUTCOME STATEMENTS

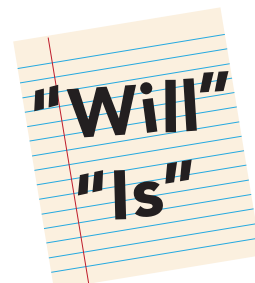
TIP Brainstorm first, then measure it!



How will we know when we have arrived? What will we see when we've met this outcome?



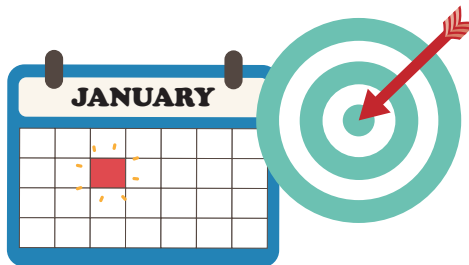
Is it connected to the need and Wraparound life domain?



Includes the word "will" or "is" to indicate a future state of being



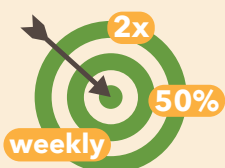
"Not" is not allowed



The outcome will be completed during the formal Wraparound process (typically 12-14 months)



Passes the S.M.A.R.T. test



S

Specific

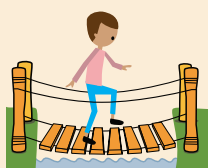
Linked to a rate, number, percentage, frequency or list of specific things to be accomplished



M

Measurable

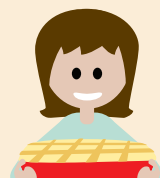
Reliable process to measure progress toward achievement of outcome



A

Achievable

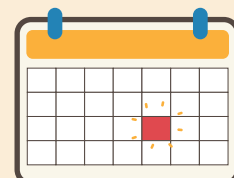
Can be accomplished with a reasonable amount of effort



R

Realistic

Individual possesses the necessary skills to meet the need to complete the outcome



T

Time-Limited

Has clearly-defined start or end dates when the outcome statement will be completed