



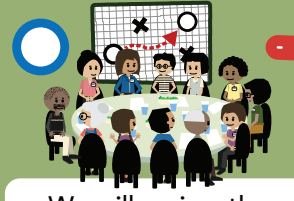
# WRAPAROUND



# TEAM MISSION



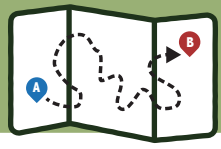
The Wraparound Team Mission states what our team's main goals are during the formal Wraparound Planning Process.



We will review the Team Mission at **EVERY TEAM MEETING** to track our progress.



The Team Mission is an item in the **PLAN OF CARE**. It is one of the first tasks we will create together as a Wraparound Team.



The Team Mission is a **ROADMAP** to help us stay focused on the work that we want to accomplish during the Wraparound Planning Process.



**A TEAM MISSION is:**

- Clear and specific
- Includes legal mandates
- Written in strengths-based language
- Written as if true today



All Wraparound Team Members will contribute their voice, needs, and goals to the creation of the Wraparound Team Mission.



The Wraparound Team Mission is achievable within **12 to 14 months.\***

I'm Sam, the **Child Welfare Worker**. I'm a **system partner**. I want to ensure the **youth's safety**.

I'm Kevin, the **Youth**. I want a **part-time job**.

I'm **Grandpa Dave**. I'm a **natural support**. I want us to have more **family time** together.

Consider each **SYSTEM PARTNER'S** needs and legal mandates.

I'm Kim, the youth's **therapist**. I'm also a **system partner**. I want to see the youth build their **coping skills and resiliency**.

Consider each **TEAM MEMBER'S** relationship to the youth and family, their role, and the goals they would like to accomplish.



Ensure **EVERY TEAM MEMBER'S** voice is included and reflected.

\* The National Wraparound Initiative states that youth and families participate in Wraparound on an average of 14 months.



## Let's write a Wraparound Team Mission!

### DOES THE MISSION INCLUDE LEGAL MANDATES?

Includes mandates	Sal is consistently following the conditions of their probation and is on track to meet all requirements.
Missing mandates	Sal is staying out of trouble.

### IS THE MISSION CLEAR AND SPECIFIC?

Clear and specific	Sal is using mindfulness skills to help manage their stress and anxiety.
Vague or general	Sal is able to stay calm.

### IS THE MISSION WRITTEN IN STRENGTHS-BASED LANGUAGE?

Strengths-based	Sal is practicing compassionate communication.
Behavior-focused	Sal is not yelling at their siblings.

Hi, I'm Sal! I use "they," "their," and "them" pronouns.

### IS THE MISSION WRITTEN AS IF IT IS TRUE TODAY?

Present-tense	Sal is living at home with their family.
Future-oriented	Sal will live with their family.

### IS THE MISSION ACHIEVABLE WITHIN A 12 TO 14-MONTH TIMEFRAME? IF NOT, HOW DO WE FRAME A MISSION THAT EXTENDS PAST THE FORMAL WRAPAROUND PLANNING PROCESS?

Yes, achievable within timeframe	Sal is turning in their homework assignments on time, respectfully interacting with their classmates, and attending school regularly.
No, let's reframe	Sal graduates from high school.

